

H.264 IP Camera User Manual

1. introduction

IPCAM is an solution of integrated wireless network camera. It put high quality network digital video cameras connected with powerful web server together.it can display the vedio from the local network or the Internet image clearly on your desktop.

The basic function of IPCAM is transmit video data with network, using the MJPEG hardware compression technology,The speed of transmission with high quality video image on a LAN, wan transmission can reach 30 frames per second.

IPCAM video data transmission based on TCP/IP protocol. The built-in Web server support Internet so you can manage and matain your equipment and achieve remote configuration, start-up and upgrade the firmware easily.

You can take advantage of IPCAM monitoring your home or office and other special area you want to monitor. As well you can control the network camera and manage picture via internet.everything is achieve through simple network access.

2.appearance



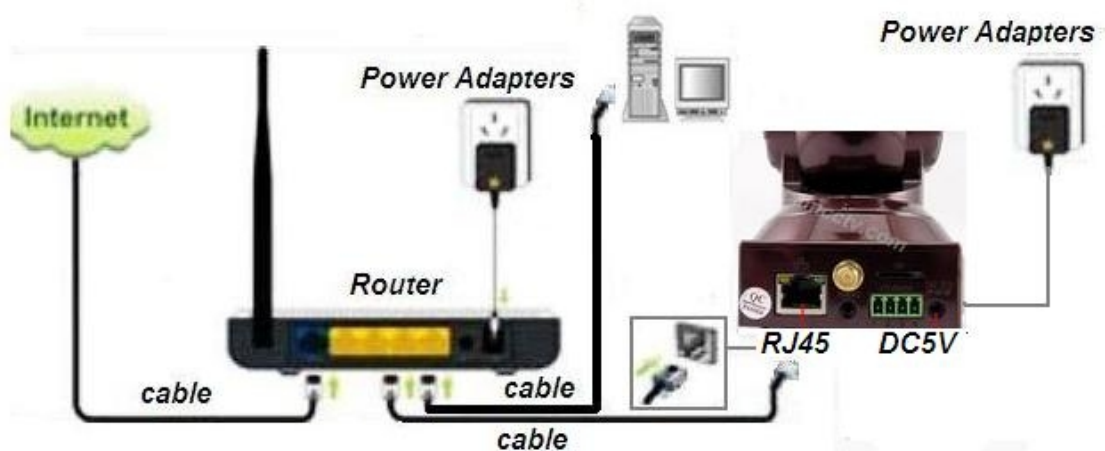


★1 Connection

- 1) First: connect the camera with hub, switch or router by Cat.5 straight-through cable or cross-over cable with standard RJ-45 interface. Or connect it with PC directly by the cable mentioned.
- 2) Second: connect the camera with power supply by the adaptor supplied (DC5V, 2A).

Caution: Please ensure that the adaptor matches with the electricity (Input: AC 110V or 220V, Output: 5V DC/2A).





★2 Setup and Startup

Use of computers and cameras within a LAN

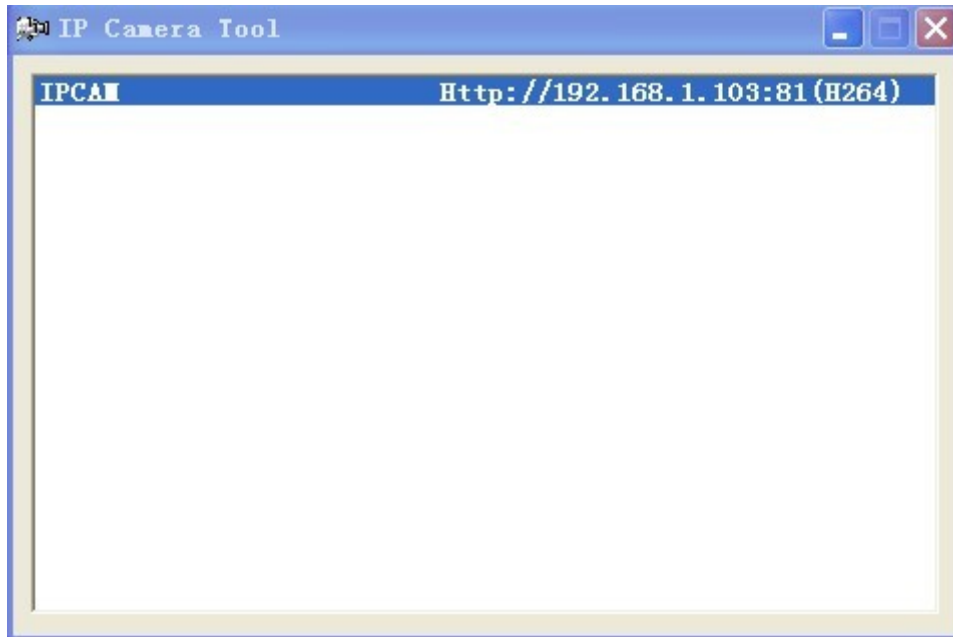
1) Open the CD



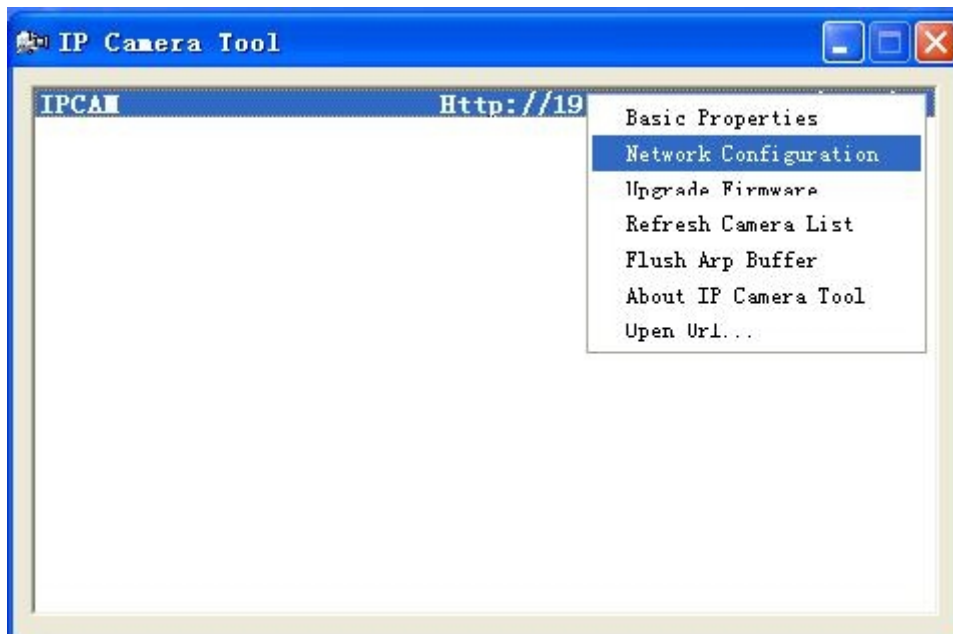
2) copy to desktop

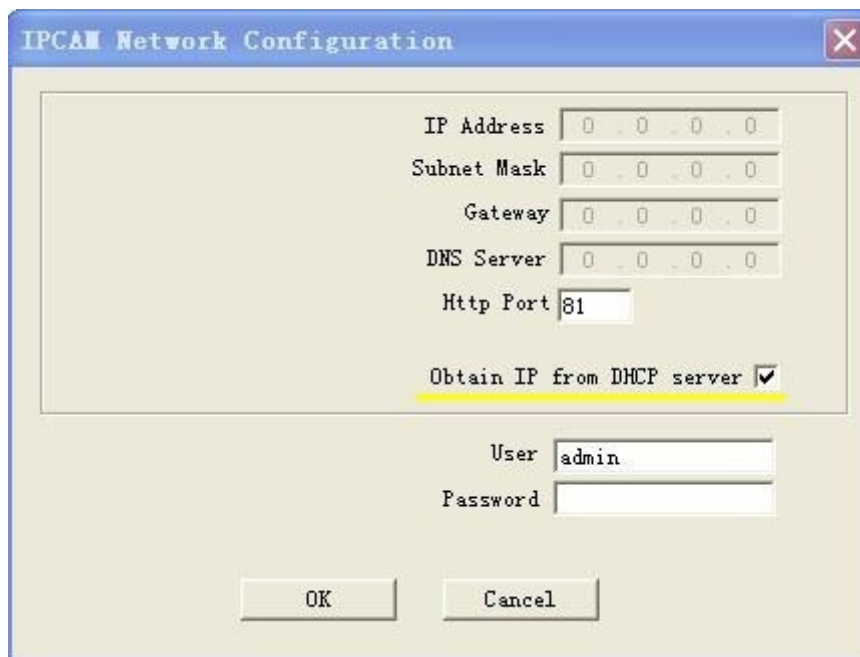


double-click the above icon and a dialogue box appears: the IP address of the camera will appear after several seconds later.



Obtain IP from DHCP Server





Restarted after the ip camera, It takes about 30 seconds



You may encounter a problem: while the device is not able to search to open a Web page, in which case you can try to clear the ARP cache.

★3 Installing OCX

1) Login

Input the URL (for example, <http://192.168.0.101:81>) or enter the home page by ip camera tool mentioned above.

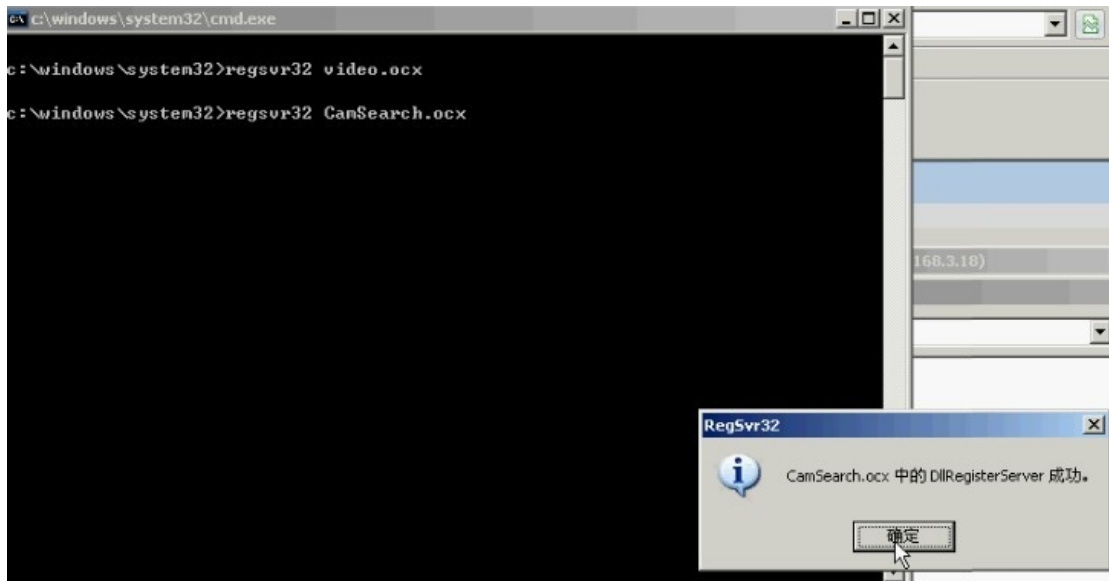
Input the user name and password (**default user: admin; no password**). Click "Sign in" and enter the monitoring page (Max. 4 users viewing simultaneously).

Language optional: Traditional and Simplified Chinese, English, Spanish, Deutsch, French, Italian, Polish and Korean.

Note: There are three modes optional for different applications. Please select one according to your web browser.

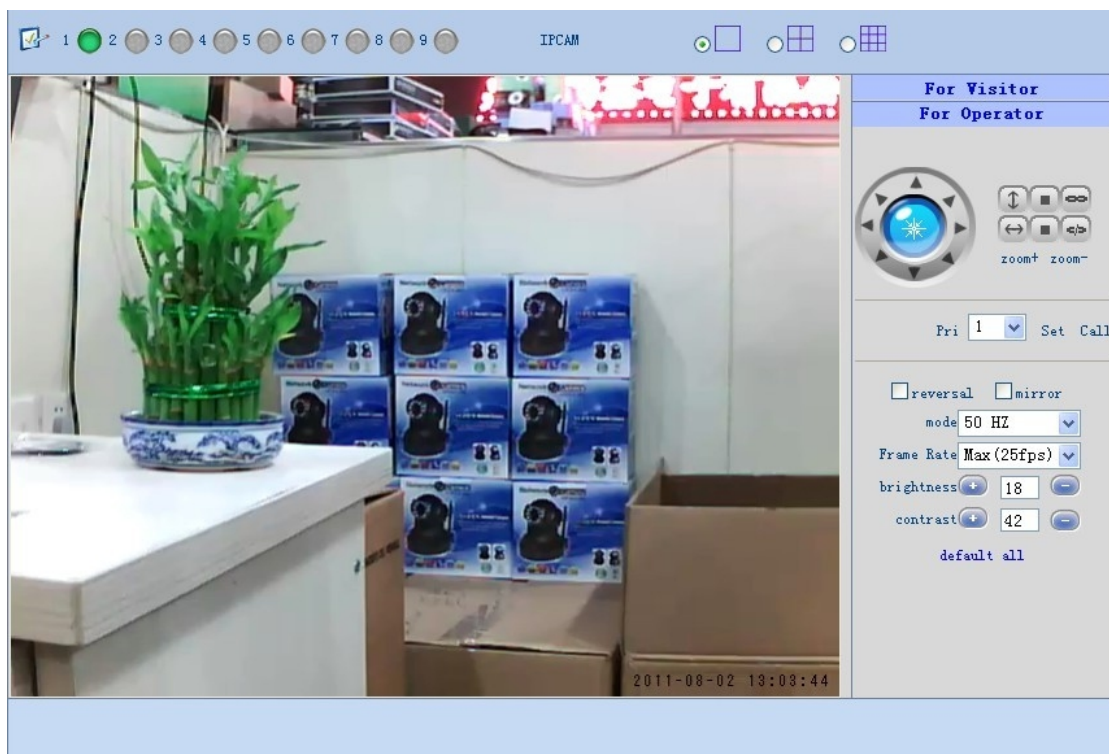
If it's the first time a camera being viewed in a PC, .an **OCX** file needs installing in the PC. Please download **OCX** file and install it. Next, please refresh the page and login again.





★4 Adjustment picture clarity

1) recommend: reply the default first, Adjust brightness (the best 18) and contrast (the best 42)



2) (Rotating lens circle)



★5 Fill in the network properties manually

If you select "Obtain IP from DHCP server" when the router supports DHCP server function and it must be enabled. This is typically used when you don't know the network properties.

Basic Network Settings	
Obtain IP from DHCP Server	<input checked="" type="checkbox"/>
Http Port	81
Rtsp port	554
<input type="button" value="Submit"/> <input type="button" value="Refresh"/>	

You can manually fill in when you know the network properties

For example: 192.168.0.110, http port 85

Basic Network Settings	
Obtain IP from DHCP Server	<input type="checkbox"/>
IP Addr	192.168.0.110
Subnet Mask	255.255.255.0
Gateway	192.168.0.1
DNS Server1	202.96.134.133
DNS Server2	202.96.128.166
Http Port	85
Rtsp port	554
<input type="button" value="Submit"/> <input type="button" value="Refresh"/>	

please fill in DNS coder in server manually and keep it correspondence with Hub.Routers running status page-DNS

Advanced settings	Wireless settings	DHCP Server	Virtual server	Security settings	Routing settings
System status	WAN settings	LAN settings	DNS settings	Bandwidth control	Traffic s
WAN status:					
Connection status		Connected			
WAN IP		183.13.147.199			
Subnet Mask		255.255.255.255			
Gateway		183.13.144.1			
DNS server		202.96.134.133			
Alternate DNS server		202.96.128.166			
Connection type		PPPoE			
Connection time		00:20:00			

IP Camera Tool	
IPCAM	Http://192.168.0.110:85 (H264)

★6 Wireless Lan Settings (For wireless ip camera only)

1) Please select Wireless Lan Settings and click Scan. Then the camera scans the WLAN nearby and lists the results.

Wireless Lan Settings	
Wireless Network List	Tenda_5AC0C8 [C8:3A:35:5A:C0:C8] Manag WPA-PSK (AES)
	Scan
Using Wireless Lan	<input type="checkbox"/>
Submit Refresh	

2) you can fill in the SSID, Encryption method and Keys according to the wireless network settings of your wireless router. Select None if no encryption is set.

Advanced settings	Wireless settings	DHCP Server	Virtual server	Security settings	Routing settings
Wireless Basic Settings Wireless Security Access Control Connection Status					
SSID -- "Tenda_5AC0C8"					
Security Mode WPA - PSK					
WPA Algorithms <input checked="" type="radio"/> AES <input type="radio"/> TKIP <input type="radio"/> TKIP&AES					
Key 70019508					
Key Renewal Interval 3600 Second					
WPS Settings <input checked="" type="radio"/> Disable <input type="radio"/> Enable					

Wireless Lan Settings	
Wireless Network List	<div>Tenda_5AC0C8 [C8:3A:35:5A:C0:C8] Manag WPA-PSK (AES)</div> <div></div> <div>Scan</div>
Using Wireless Lan	<input checked="" type="checkbox"/>
SSID	Tenda_5AC0C8 [C8:3A:35
Network Type	Infra
Encryption	WPA-PSK Personal (AES)
Share Key	70019508
<div>Submit</div> <div>Refresh</div>	

3) As it's correctly set, please pull out the network cable and the camera will reboot. Please do not switch off the power supply while it's rebooting.

★7 How to view on the Internet?

Select "virtual server". Fill in the ip address and port the ip camera you've set.

1) Static IP Address

Routers running status page-WAN IP

Advanced settings	Wireless settings	DHCP Server	Virtual server	Security settings	Routing settings
System status WAN settings LAN settings DNS settings Bandwidth control Traffic s					
WAN status:					
Connection status Connected					
WAN IP 183.13.147.199					
Subnet Mask 255.255.255.255					
Gateway 183.13.144.1					
DNS server 202.96.134.133					
Alternate DNS server 202.96.128.166					
Connection type PPPoE					
Connection time 00:47:49					

You just need to fill in the ip address provided by your network service supplier if you access to the Internet in this way. And then you can view the camera on the Internet by inputting the ip address.

For example: <http://183.13.147.199:85>

2) Dynamic IP Address 1

Step1: Set a static ip address for the camera;

Reference ★5: Fill in the network properties manually

Step2: Set the router;

Select "virtual server". Fill in the ip address and port the ip camera you've set.

Advanced settings	Wireless settings	DHCP Server	Virtual server	Security settings	Routing settings	
Port Range Forwarding DMZ Host UPNP Settings						
NO.	Start port	End port	LAN IP	Protocol	Enable	Delete
1.	85	85	192.168.0.110	TCP	<input checked="" type="checkbox"/>	<input type="checkbox"/>
2.			192.168.0.	TCP	<input type="checkbox"/>	<input type="checkbox"/>
3.			192.168.0.	TCP	<input type="checkbox"/>	<input type="checkbox"/>
4.			192.168.0.	TCP	<input type="checkbox"/>	<input type="checkbox"/>
5.			192.168.0.	TCP	<input type="checkbox"/>	<input type="checkbox"/>
6.			192.168.0.	TCP	<input type="checkbox"/>	<input type="checkbox"/>
7.			192.168.0.	TCP	<input type="checkbox"/>	<input type="checkbox"/>
8.			192.168.0.	TCP	<input type="checkbox"/>	<input type="checkbox"/>
9.			192.168.0.	TCP	<input type="checkbox"/>	<input type="checkbox"/>
10.			192.168.0.	TCP	<input type="checkbox"/>	<input type="checkbox"/>
Well-known service ports:			DNS(53)	Add to	ID	1
			Ok	Cancel		

Step3:Set the camera at Domain name service set

Domain Name Service Set	
dns enable	<input checked="" type="checkbox"/>
DNS Server	<input type="text" value="dns.camcctv.com"/>
Domain Port	<input type="text" value="2011"/>
Heartbeat interval	<input type="text" value="150"/>
<input type="button" value="Submit"/> <input type="button" value="Refresh"/>	

Step4: Acquire a dynamic domain name;

Login via the domain name provided with the camera (on the bottom of the camera).
It's the last 5 letters or numbers of the device ID plus the domain name. For example:
<http://abc12.camcctv.com>

3) Dynamic IP Address 2

Step1: Set a static ip address for the camera;

参考第 5 项设置: Fill in the network properties manually

Step2: Set the router;

Select "virtual server". Fill in the ip address and port the ip camera you've set.

Advanced settings	Wireless settings	DHCP Server	Virtual server	Security settings	Routing settings	
Port Range Forwarding DMZ Host UPNP Settings						
NO.	Start_port	End_port	LAN IP	Protocol	Enable	Delete
1.	<input type="text" value="85"/>	<input type="text" value="85"/>	<input type="text" value="192.168.0.110"/>	<input type="text" value="TCP"/>	<input checked="" type="checkbox"/>	<input type="checkbox"/>
2.	<input type="text"/>	<input type="text"/>	<input type="text" value="192.168.0."/>	<input type="text" value="TCP"/>	<input type="checkbox"/>	<input type="checkbox"/>
3.	<input type="text"/>	<input type="text"/>	<input type="text" value="192.168.0."/>	<input type="text" value="TCP"/>	<input type="checkbox"/>	<input type="checkbox"/>
4.	<input type="text"/>	<input type="text"/>	<input type="text" value="192.168.0."/>	<input type="text" value="TCP"/>	<input type="checkbox"/>	<input type="checkbox"/>
5.	<input type="text"/>	<input type="text"/>	<input type="text" value="192.168.0."/>	<input type="text" value="TCP"/>	<input type="checkbox"/>	<input type="checkbox"/>
6.	<input type="text"/>	<input type="text"/>	<input type="text" value="192.168.0."/>	<input type="text" value="TCP"/>	<input type="checkbox"/>	<input type="checkbox"/>
7.	<input type="text"/>	<input type="text"/>	<input type="text" value="192.168.0."/>	<input type="text" value="TCP"/>	<input type="checkbox"/>	<input type="checkbox"/>
8.	<input type="text"/>	<input type="text"/>	<input type="text" value="192.168.0."/>	<input type="text" value="TCP"/>	<input type="checkbox"/>	<input type="checkbox"/>
9.	<input type="text"/>	<input type="text"/>	<input type="text" value="192.168.0."/>	<input type="text" value="TCP"/>	<input type="checkbox"/>	<input type="checkbox"/>
10.	<input type="text"/>	<input type="text"/>	<input type="text" value="192.168.0."/>	<input type="text" value="TCP"/>	<input type="checkbox"/>	<input type="checkbox"/>
Well-known service ports:			<input type="text" value="DNS(53)"/>	<input type="button" value="Add to"/>	ID	<input type="text" value="1"/>
			<input type="button" value="Ok"/>	<input type="button" value="Cancel"/>		

Step3: Acquire a dynamic domain name;

Logon www.dyndns.com.

Step4: Set the camera at DDNS service settings.

If all the steps above are correctly set, you can view the camera on the Internet by inputting the URL, like "http://rh-ipcam.selfip.com" at web browser. (Note: the default port of our camera is 80. you can set it from 0 to 65535 as you wish (it can't be the same with the gateway). When the port is 80, you can input the domain only. While it is other ports, for instance 85, you need to input

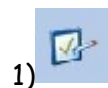
"<http://rh-ipcam.self.com:85>" likewise. And now you can enjoy monitoring over the Internet.

DDNS Service Settings	
DDNS Service	DynDns.org(dyndns) ▼
DDNS User	rh-ipcam
DDNS Password	••••••
DDNS Host	rh-ipcam.selfip.com
DDNS Status	DynDns Succeed
Re-Update Ignoring All Errors	<input type="checkbox"/> never do this unless your hostname has been unblocked
<input type="button" value="Submit"/> <input type="button" value="Refresh"/>	

[Device Info](#)
[Alias Settings](#)
[Date&Time Settings](#)
[Users Settings](#)
[Multi-Device Settings](#)
[Basic Network Settings](#)
[Wireless Lan Settings](#)
[ADSL Settings](#)
[UPnP Settings](#)
[DDNS Service Settings](#)
[Mail Service Settings](#)
[Ftp Service Settings](#)
[Alarm Service Settings](#)
[Upgrade Device Firmware](#)
[Restore Factory Settings](#)
[Reboot Device](#)
[Back](#)

★8 TF/MSD for video

Don't support hot swaps, first insert CARDS then connect with power supply.
 make vedio with continous power supply
 After complete the vedio then stop the powe supply and pull the card out.



2) Date&Time Settings: Sync with PC Time

Date&Time Settings	
Device Clock Time	2011年8月31日 11:32:11
Device Clock Timezone	(GMT +08:00) Beijing, Singapore, Taipei ▼
Sync with NTP Server	<input checked="" type="checkbox"/>
Ntp Server	time.nist.gov ▼
Sync with PC Time	<input checked="" type="checkbox"/>
<input type="button" value="Submit"/> <input type="button" value="Refresh"/>	

3) Record Schdule:

Set up a plan for video, can turn off the computer, keep to video for whole day.

Under Media Size : 320x240 Rate: 512 , 24 hours of video will take up size 2GB, it provide most up to 16G TF card.

Record Schdule	
sd state	SD card has been inserted
Record coverage	<input type="checkbox"/>
GPIO alarm record	<input type="checkbox"/>
Motion record	<input type="checkbox"/>
Timer recording	<input checked="" type="checkbox"/>
Day	0 1 2 3 4 5 6 7 8 9 10 11 12 13 14 15 16 17 18 19 20 21 22 23
Sun	
Mon	
Tue	
Wed	
Thu	
Fri	
Sat	
<input type="button" value="Submit"/> <input type="button" value="Refresh"/>	

4) Recording file list:

More than 10 minutes of video files appear in video file list, video files within 10 minutes can be read in SD card, not in video files list.

Recording file list		
Record File		
20110602233426.h264	Download	Delete
20110602234426.h264	Download	Delete
20110602235432.h264	Download	Delete

5) Refresh video information, download to your computer and drag it to media payler (IN CD) for replay



★9 record ,snapshot in computer

record ,snapshot,save disk,you can assign them manually in equipment, don't write operation invalid. Don't provide recording function.

1)



→Record Path→

Record Path	
Local recording file list	<input type="text" value="d:\abcd"/>
<input type="button" value="Submit"/> <input type="button" value="Refresh"/>	



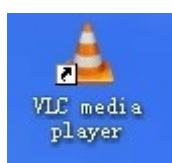
2)

3) To find photo or recorder file in designated disk.

Open the midea player,drag the file of recorder to media to replay.



4) drag it to media payler (IN CD) for replay



★10 Media Configuration

Media Size: 640x480 Rate: 1024 most clear

Media Size: 320x240 Rate: 512 Remote access screen is fluent, storage take up

the space is small

Long distance more fluent Rate:200-250

Media Configuration		Device Info
Media Size	VGA (640x480) ▼	Alias Settings
Rate mode	CBR ▼	Date&Time Settings
Key frame	50	Users Settings
Quality	30	Multi-Device Settings
Rate	250	Basic Network Settings
Submit Refresh		Domain Name Service Set
		Wireless Lan Settings
		ADSL Settings
		UPnP Settings
		DDNS Service Settings
		Mail Service Settings
		Ftp Service Settings
		Alarm Service Settings
		Media Configuration
		Record Schedule
		Record Information
		Record Path
		PIZ Settings
		Upgrade Device Firmware
		Restore Factory Settings
		Reboot Device
		Log
		Back

★11 Other function is introduced

1. Ip Camera Tool In language transformation



2.



1CH, 4CH, 9CH



1). For Visitor



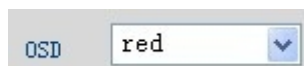
click the headset, speak to the camera, the computer can send voice, which is monitoring function



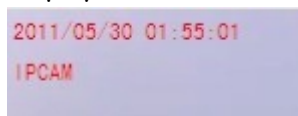
Click Mic, spoke to the computer, camera sounds, which is the point of talking to be monitored

Do not click the headset and microphone at the same time, it will interfere

OSD



display the Camera's name and time



2). For Operator

Control P/T



☐ reversal ☐ mirror

3. For administrator



1) DeviceInfo

Device Status	
Device ID	000000000c68c0
Device Firmware Version	May 21 2011 06:05:28 v1
Device Embeded Web UI Version	2011.04.27 10.22
Alias	IPCAM
Alarm Status	None
DDNS Status	No Action
UPnP Status	UPnP Succeed
inter ip addr	192.168.1.103
sd status	OMB
sd status1	OMB
Refresh	

2) Only support English and Arabic numerals

alias: give a name to your camera, for instance, Room1, Hall, Office, etc. You can easily recognize each camera by their names especially when there are many cameras.

Alias Settings	
Alias	IPCAM
Submit Refresh	

3)

Date&Time Settings	
Device Clock Time	2011年6月6日 12:56:57
Device Clock Timezone	(GMT +08:00) Beijing, Singapore, Taipei ▼
Sync with NTP Server	<input checked="" type="checkbox"/>
Ntp Server	time.nist.gov ▼
Sync with PC Time	<input type="checkbox"/>
Submit Refresh	

4) 8 User and Password,

admin0-admin0.....admin6-admin6, admin- empty

Users Settings		
User	Password	
admin0	
admin1	
admin2	
admin3	
admin4	
admin5	
admin6	
admin		
<input type="button" value="Submit"/> <input type="button" value="Refresh"/>		

5)

Please select "Multi-Device Settings". If the cameras are within the same LAN, their ip address will list in Device List in Lan. Then click The 2nd Device and select the ip address of the camera you want to add. Double-click the ip address and fill in the required information. Click Add and then **Submit**.

Multi-Device Settings	
Device List in Lan	<div> <div>测%20试1 (192.168.0.99)</div> <div>IPCAM(192.168.0.229)</div> </div> <input type="button" value="Refresh"/>
The 1st Device	This Device
The 2nd Device	None
Alias	IPCAM
Host	192.168.0.229
Command Port	81
Media Port	81
User	
Password	
	<input type="button" value="Add"/> <input type="button" value="Remove"/>
The 3rd Device	None
The 4th Device	None
The 5th Device	None
The 6th Device	None

Device Info

Alias Settings

Date&Time Settings

Users Settings

Multi-Device Settings

Basic Network Settings

Domain Name Service Set

Wireless Lan Settings

ADSL Settings

UPnP Settings

DDNS Service Settings

Mail Service Settings

Ftp Service Settings

Alarm Service Settings

Media Configuration

Record Schedule

Record Information

Record Path

PTZ Settings

Upgrade Device Firmware

Restore Factory Settings

Reboot Device

Log

Back

The 1st Device	This Device	Alias Settings Date&Time Settings Users Settings Multi-Device Settings Basic Network Settings Domain Name Service Set Wireless Lan Settings ADSL Settings UPnP Settings DDNS Service Settings Mail Service Settings Ftp Service Settings Alarm Service Settings Media Configuration Record Schedule Record Information Record Path PTZ Settings Upgrade Device Firmware Restore Factory Settings Reboot Device Log Back
The 2nd Device	None	
Alias	IPCAM	
Host	192.168.0.229	
Command Port	81	
Media Port	81	
User	admin	
Password		
	<input type="button" value="Add"/> <input type="button" value="Remove"/>	
The 3rd Device	None	
The 4th Device	None	
The 5th Device	None	
The 6th Device	None	
The 7th Device	None	
The 8th Device	None	
The 9th Device	None	
attention: If you want to access the device from internet, be sure the host and port that you set can be accessed from internet.		
<input type="button" value="Submit"/> <input type="button" value="Refresh"/>		

Get back to the monitoring page and select 4Ch or 9Ch window and then you will see the images of the cameras.

1 2 3 4 5 6 7 8 9 IPCAM		
		For Visitor For Operator zoom+ zoom- Pri 1 Set Call <input type="checkbox"/> reversal <input type="checkbox"/> mirror mode 50 HZ Frame Rate Max (25fps) brightness 18 contrast 42 default all

- 6) Please select Using ADSL Dialup and fill in the correct user and password if you use ADSL dialup to connect to the Internet.

ADSL Settings	
Using ADSL Dialup	<input checked="" type="checkbox"/>
ADSL User	admin
ADSL Password	•••••
<input type="button" value="Submit"/> <input type="button" value="Refresh"/>	

7) UPnP Settings

Please select Using UPnP to Map Port if the router has the function, while leave it blank if none.

UPnP Settings	
Using UPnP to Map Port	<input checked="" type="checkbox"/>
<input type="button" value="Submit"/> <input type="button" value="Refresh"/>	

8)

Mail Service Settings:

Sender: input a valid email address to send pictures when alarm triggered;

Receiver: input a valid e-mail address to receive pictures when alarm triggered. Now it supports up to 4 receivers.

SMTP User and Password: the user and password of the sender (email account and password).

Alarm Service Settings	
Motion Detect Armed	<input checked="" type="checkbox"/>
Motion Detect Sensibility	5 <input type="button" value="v"/>
alarm preset linkage	None <input type="button" value="v"/>
Alarm Input Armed	<input type="checkbox"/>
IO Linkage on Alarm	<input type="checkbox"/>
Send Alarm Notification by Mail	<input checked="" type="checkbox"/>
Upload Image on Alarm	<input checked="" type="checkbox"/>
Upload Interval (Seconds)	2 <input type="button" value="v"/>
Scheduler	<input checked="" type="checkbox"/>
Day 0 1 2 3 4 5 6 7 8 9 10 11 12 13 14 15 16 17 18 19 20 21 22 23 Sun Mon Tue Wed Thu Fri <input checked="" type="checkbox"/> <input checked="" type="checkbox"/> <input checked="" type="checkbox"/> <input checked="" type="checkbox"/> <input checked="" type="checkbox"/> <input checked="" type="checkbox"/> <input checked="" type="checkbox"/> Sat	
<input type="button" value="Submit"/> <input type="button" value="Refresh"/>	

Device Info
Alias Settings
Date&Time Settings
Users Settings
Multi-Device Settings
Basic Network Settings
Domain Name Service Set
Wireless Lan Settings
ADSL Settings
UPnP Settings
DDNS Service Settings
Mail Service Settings
Ftp Service Settings
Alarm Service Settings
Media Configuration
Record Schedule
Record Information
Record Path
PTZ Settings
Upgrade Device Firmware
Restore Factory Settings
Reboot Device
Log
Back



Mail Service Settings	
Sender	buygood@139.com
Receiver 1	solike77@gmail.com
Receiver 2	
Receiver 3	
Receiver 4	
SMTP Server	smtp.139.com
SMTP Port	25
Need Authentication	<input checked="" type="checkbox"/>
SMTP User	buygood@139.com
SMTP Password	*****
	<input type="button" value="Test"/> Please set at first, and then test.
Report Internet IP by Mail	<input type="checkbox"/>
<input type="button" value="Submit"/> <input type="button" value="Refresh"/>	

Device Info
Alias Settings
Date&Time Settings
Users Settings
Multi-Device Settings
Basic Network Settings
Domain Name Service Set
Wireless Lan Settings
ADSL Settings
UPnP Settings
DDNS Service Settings
Mail Service Settings
Ftp Service Settings
Alarm Service Settings
Media Configuration
Record Schedule
Record Information
Record Path
PTZ Settings
Upgrade Device Firmware
Restore Factory Settings
Reboot Device
Log
Back

9) Ftp Service Settings

Ftp service is used to send the captured pictures when alarm triggered to ftp server and save them. If the camera is not connected to the Internet, there is no need to set this function.

Ftp Service Settings	
FTP Server	tekego.com.cn
FTP Port	21
FTP User	CWCB240
FTP Password	*****
FTP Upload Folder	ipcamera_alarm
FTP Mode	PORT
Upload Image Now	<input checked="" type="checkbox"/>
Upload Interval (Seconds)	1
<input type="button" value="Submit"/> <input type="button" value="Refresh"/>	

FTP Server: the website you want to upload the picture to;

FTP Port: 21

FTP User: user name to login ftp server;

FTP Password: password to login ftp server;

FTP Upload Folder: folder to upload the save the pictures;

FTP Mode: please select PORT;

Upload Image Now: when it's selected, the camera will upload pictures immediately after it comes into effect;

Upload Interval (Seconds): set the upload interval; unit: second.

10) Alarm Service Settings:

Click "Alarm Service Setting" and it will enter the page below:



start-up don't automatically rotating:

Go on the center on (not choose), with the pre - bit (choose)

Rotating speed:

0 the slowest, 10 the fastest

PTZ Settings	
Singal lamp	Close <input type="button" value="v"/>
Go center on boot(do not go center, must disable preset)	<input type="checkbox"/>
against pre-bit	<input checked="" type="checkbox"/>
PTZ speed	0 <input type="button" value="v"/>
Upward patrol speed	0 <input type="button" value="v"/>
Downward patrol speed	0 <input type="button" value="v"/>
Leftward patrol speed	0 <input type="button" value="v"/>
Rightward patrol speed	0 <input type="button" value="v"/>
<input type="button" value="Submit"/> <input type="button" value="Refresh"/>	

12) Upgrade Device Firmware

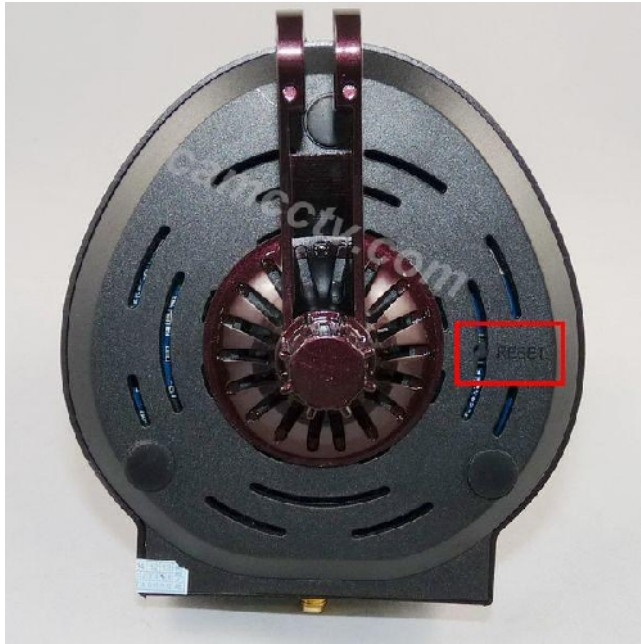
Don't upgrade any program without the guidance from supplier

Upgrade Device Firmware			
Upgrade Device Firmware	<input type="text"/>	<input type="button" value="浏览..."/>	<input type="button" value="Upgrade"/>
Upgrade Device Embeded Web UI	<input type="text"/>	<input type="button" value="浏览..."/>	<input type="button" value="Upgrade"/>

13)restore factory

14)硬件重启

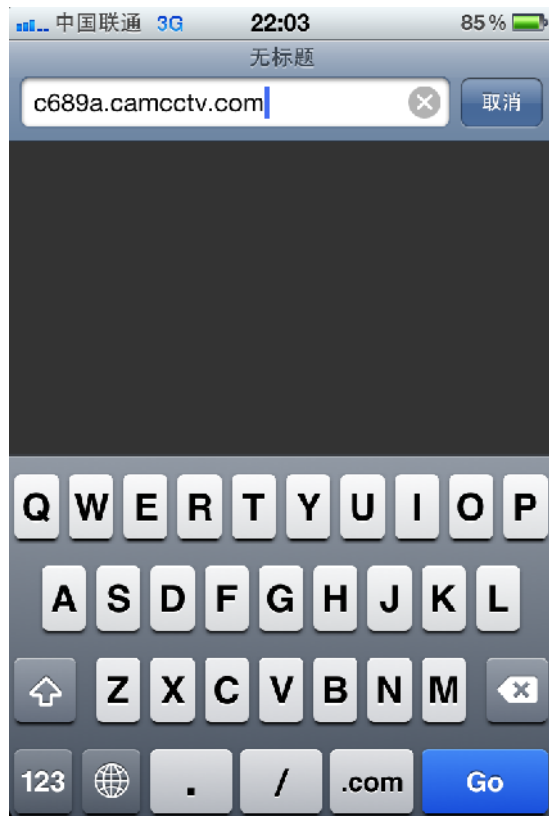
在摄像机无法进行页面操作的情况下你可以试着重启设备，在摄像机带电状态下按住 RESET 键大约 10-15 秒，摄像机指示灯会闪亮一下，设备重启。



★12 手机观看

智能手机登录，以 I Phone 4 为例

No Plug-In 模式（适用于智能手机浏览器）- 登录





★ 13 Packing list :

Wireless camera×1

Bracket×1
 Antenna×1
 Power Adaptor DC 5V×1
 CD×1 (IP Camera Tool, RecordPlayer)

★ 14 Function & Upgrade Comparison

	
Image Compression: M-JPEG	Image Compression: H.264
6mm lens	6mm lens
Day and night	Day and night
IR 2.0Lux IR 5-8m	IR-Cut 0.3Lux IR 5-8m
	Without color shift
Pan/Tilt Angle : Horizontal:270° & Vertical: 120°	Pan/Tilt Angle : Horizontal:270° & Vertical: 120°
Ethernet: One 10/100Mbps RJ-45	Ethernet: One 10/100Mbps RJ-45
Wireless Standard: IEEE 802.11b/g	Wireless Standard: IEEE 802.11b/g
Audio: two ways	Audio: two ways
No sd Card	Maximum support 16G sd Card
Video takes up the space: 1G/40min	Video takes up the space: 1G/720min
Support mobile browsing : HTTP	Support mobile browsing : HTTP, RSTP
Box size: 200*120*180cm Weight: 600g	Box size: 200*120*180cm Weight: 600g

★15 IR-CUT

When the IR IP Camera is equipped with IR Auto device, it has great color at daytime without color shift.



Technical support email : ip-camera2011@hotmail.com

Please at first indicate the serial number for the fault camera so that we can give you satisfactory reply: please view it on information column.

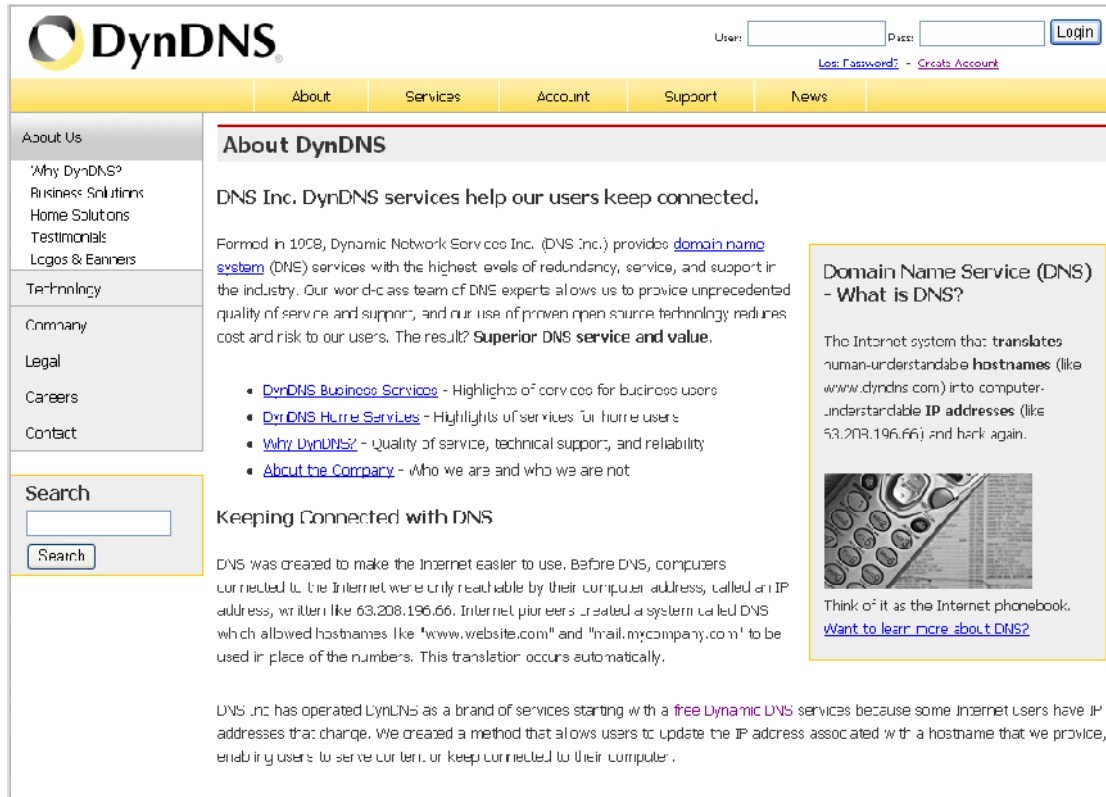
Device Status	
Device ID	000000000c68c0

Please contact supplier when you Can not inquires the serial number by access to a camera.

Especial declaration: only response for technical operation questions, about product price and other business problem we refuse to reply, please contact with your supplier, thanks so much for your support!

Acquire a dynamic domain name

1. Logon www.dyndns.com.



DynDNS

User: Password: [Login](#)

[Lost Password?](#) - [Create Account](#)

[About](#) [Services](#) [Account](#) [Support](#) [News](#)

About Us

[Why DynDNS?](#)
[Business Solutions](#)
[Home Solutions](#)
[Testimonials](#)
[Logos & Banners](#)

[Technology](#)

[Company](#)
[Legal](#)
[Careers](#)
[Contact](#)

Search

[Search](#)

About DynDNS

DNS Inc. DynDNS services help our users keep connected.

Formed in 1998, Dynamic Network Services Inc. (DNS Inc.) provides [domain name system](#) (DNS) services with the highest levels of redundancy, service, and support in the industry. Our world-class team of DNS experts allows us to provide unprecedented quality of service and support, and our use of proven open source technology reduces cost and risk to our users. The result? **Superior DNS service and value.**

- [DynDNS Business Services](#) - Highlights of services for business users
- [DynDNS Home Services](#) - Highlights of services for home users
- [Why DynDNS?](#) - Quality of service, technical support, and reliability
- [About the Company](#) - Who we are and who we are not

Keeping Connected with DNS

DNS was created to make the Internet easier to use. Before DNS, computers connected to the Internet were only reachable by their computer address, called an IP address, written like 63.208.196.66. Internet pioneers created a system called DNS which allowed hostnames like "www.website.com" and "mail.mycompany.com" to be used in place of the numbers. This translation occurs automatically.

DNS Inc. has operated DynDNS as a brand of services starting with a **free Dynamic DNS** service because some Internet users have IP addresses that change. We created a method that allows users to update the IP address associated with a hostname that we provide, enabling users to stay online or keep connected to their computer.

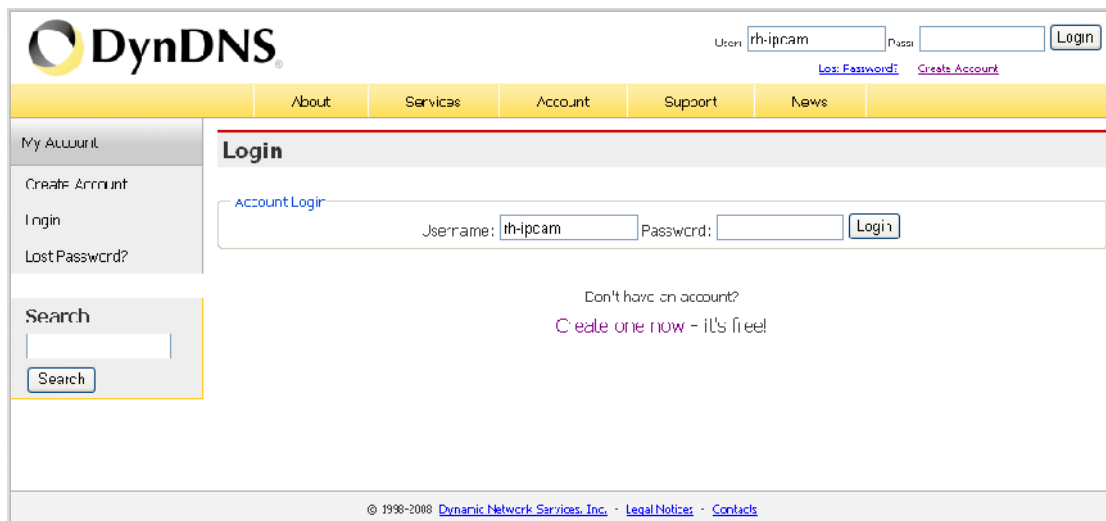
Domain Name Service (DNS) - What is DNS?

The Internet system that **translates** human-understandable **hostnames** (like [www.dynDNS.com](#)) into computer-understandable **IP addresses** (like 63.208.196.66) and back again.

Think of it as the Internet phonebook.

[Want to learn more about DNS?](#)

2. Click "[Account](#)". If you already have an account, please just fill the username and password, and login. Otherwise, please select "Create one now" and it's free!



DynDNS

User: Password: [Login](#)

[Lost Password?](#) - [Create Account](#)

[About](#) [Services](#) [Account](#) [Support](#) [News](#)

My Account

[Create Account](#)
[Login](#)
[Lost Password?](#)

Search

[Search](#)

Login

[Account Login](#)

Username: Password: [Login](#)

Don't have an account?

[Create one now - it's free!](#)

© 1998-2008 [Dynamic Network Services, Inc.](#) - [Legal Notices](#) - [Contact](#)

3. Fill in the necessary information and do remember your Username and Password, or you can take them down. After completing the information, click "[Create Account](#)".

My Account

[Create Account](#)
[Login](#)
[Lost Password?](#)

Search

Create Your DynDNS Account

Please complete the form to create your free DynDNS Account

- User Information -

Username:

Email Address:

Confirm Email Address:

Password:

Confirm Password:

Instructions to activate your account will be sent to the email address provided.

Your password needs to be more than 5 characters and cannot be the same as your user name. Do not choose a password that is a common word, or can otherwise be easily guessed.

- About You (optional) -

Providing this information will help us to better understand our customers, and tailor future offerings more accurately to your needs. Thanks for your help!

How did you hear about us:

Details:

We **do not sell** your account information to anyone, including your email address.

- Terms of Service -

Please read the acceptable use policy (AUP) and accept it prior to creating your account. Also acknowledge that you may only have one (1) free account, and that creation of multiple free accounts will result in the deletion of all of your accounts.

Policy Last Modified: May 21, 2008

1. ACKNOWLEDGMENT AND ACCEPTANCE OF TERMS OF SERVICE

All services provided by Dynamic Network Services, Inc. ("DynDNS") are provided to you (the "Member") under the Terms and Conditions set forth in this Acceptable Use Policy ("AUP") and any other operating rules and policies set forth by DynDNS. The AUP comprises the entire agreement between the Member and DynDNS and supersedes all prior agreements between the parties regarding the subject matter contained herein. BY COMPLETING THE REGISTRATION PROCESS AND CLICKING THE "Accept" BUTTON, YOU ARE INDICATING YOUR AGREEMENT TO BE BOUND BY ALL OF THE TERMS AND CONDITIONS OF THE AUP.

2. DESCRIPTION OF SERVICE

I agree to the AUP: ☒

I will only create one (1) free account: ☒

- Mailing Lists (optional) -

DynDNS maintains a number of mailing lists designed to keep our users informed about product announcements, client development, our company newsletter, and our system status. Please use the checkboxes below to alter your subscription preference. Your subscription preference may be changed at any time through the [account settings](#) page.

newsletters: ☐

press-releases: ☐

system-status: ☐

- Next Step -

After you click "Create Account", we will create your account and send you an email to the address you provided. Please follow the instructions in that email to confirm your account. You will need to confirm your account within 48 hours or we will automatically delete your account. (This helps prevent unwanted robots on our systems)

Then the Dynamic Network Services Inc. will send you an email to the email box you have filled to confirm your registration. Next, please logon the website it has specified to activate the account, for example,

Your DynDNS Account 'rh-ipcarn' has been created. You need to visit the confirmation address below within 48 hours to complete the account creation process:

<https://www.dyndns.com/account/confirm/QMp4CLVoOSk2aej4kaJvxg>

Our basic service offerings are free, but they are supported by our paid services. See <http://www.dyndns.com/services/> for a full listing of all of our available services.

If you did not sign up for this account, this will be the only communication you will receive. All non-confirmed accounts are automatically deleted after 48 hours, and no addresses are kept on file. We apologize for any inconvenience this correspondence may have caused, and we assure you that it was only sent at the request of someone visiting our site requesting an account.

Sincerely,
The DynDNS Team
Dynamic Network Services Inc.

4. Fill the username and password and login.

The screenshot shows the DynDNS website interface. At the top, there is a navigation bar with links for About, Services, Account, Support, and News. Below this, there is a 'My Account' section on the left with links for Create Account, Login, and Lost Password?. The main content area is titled 'Login' and contains a 'Account Login' section with fields for Username (pre-filled with 'rh-ipcarn') and Password, and a 'Login' button. Below the login fields, there is a link for 'Lost Password?' and a 'Create Account' link. At the bottom of the page, there is a footer with copyright information and links for Legal Notices and Contacts.

5. Now you have login your account and you need to add host services to your account.

Click "My Hosts" and it will list the hosts you own. If you're a new user and have no host, please select "Add Host Services".


The screenshot shows the DynDNS website interface. At the top, the DynDNS logo is on the left, and the user is logged in as 'rh-ipcam' with links to 'My Services', 'My Cart', and 'Log Out'. A navigation bar contains links for 'About', 'Services', 'Account', 'Support', and 'News'. On the left side, there is a sidebar with links for 'My Account', 'My Services', 'Account Settings', 'Billing', and 'My Cart' (showing 0 items). Below this is a search bar. The main content area is titled 'Account Summary for rh-ipcam' and is divided into three columns: 'My Services', 'Billing', and 'Account Settings'. The 'My Services' column includes links for 'My Zones', 'Add Zone Services', 'My Hosts', 'Add Host Services', 'Account Upgrades', 'MailHop Outbound', 'Network Monitoring', 'SSL Certificates', 'Recursive DNS', 'Support', 'DNS Service Level Agreement', 'Premier Support', and 'Contact Support'. The 'Billing' column includes links for 'View Shopping Cart', 'Active Services', 'Order History', 'Billing Profile and Vouchers', 'Renew Services', 'Auto Renew Settings', and 'Sync Expirations'. The 'Account Settings' column includes links for 'Change Email Address', 'Change Password', 'Change Username', 'Contact Manager', 'Mailing Lists', 'Move Services', 'Preferences', and 'Close Account'.

6. Fill in a hostname and select a domain you like. You can select Wildcard: Yes, alias "hostname.domain" to same settings, or leave it blank. There are three service types: Host with IP address, WebHop Redirect and Offline Hostname. We recommend you select the first one and the web will detect your IP address automatically. (The IP address is your Ethernet IP address and you can find it at your WAN interface setting in your router/switch.) As it's successfully created, you will find it at My Hosts.

Add New Hostname

[↑ Host Services](#)

Note: You currently don't have Account Upgrades in your account. You cannot use some of our Host Service features. Please consider buying Account upgrade that make this form full-functional and will add several other features. [Learn More...](#)

Hostname:	<input type="text"/>	.	<input type="text" value="selfip.net"/>	<input type="button" value="v"/>
Wildcard:	<input type="checkbox"/> Yes, alias "*.hostname.domain" to same settings.			
Service Type:	<input checked="" type="radio"/> Host with IP address <input type="radio"/> WebHop Redirect <input type="radio"/> Offline Hostname			
				
IP Address:	<input type="text"/>			
Use auto detected IP address 116.77.51.57.				
TTL value is 60 seconds. Edit TTL.				
Mail Routing:	<input type="checkbox"/> Yes, let me configure Email routing.			

Create Host